



Plexidor® Electronic Pet Door Instructions for Replacing Motor

Step 1 - Unplug the Plexidor® Electronic Pet Door.

Step 2 - Remove the motor cover on the pet door by squeezing on the cover on both sides and tipping the motor cover down and out.

Step 3 - Remove the panel cover screw on the pet door. This screw is located just below and to the left of the metal spring. See Diagram #1. When you remove the panel cover screw, let the panel cover slide down.

Step 4 - Unscrew and remove the red wire and black wires from the top of the green circuit board.

Step 5 - Release bottom of metal spring strap. Be careful not to let go. It is under tension and will snap. Roll spring onto hub by rotating the hub. You will feel resistance as you rotate the hub.

Step 6 - Remove the retaining ring.

Step 7 - Remove the crank arm.

Step 8 - Slide off the spring hub and spring. Be sure to pull spring strap over screw post.

Step 9 - Unscrew and move the screws holding the motor gear box to the chassis plate arm. Discard the used rubber jacketed retaining nuts.

Step 10 - Put on the 4 new rubber jacketed retaining nuts by pushing them through the holes in the chassis plate arm as shown. Then place new motor gear box into position. Screw securely in place. The nuts will cinch down when screws are tightened

Step 11 - Slide spring hub with spring back on the "D" shaped mounting axle post. Turn the hub wheel to line up the "D" shaped post with "D" shape hole on hub wheel.

Step 12 - Replace crank arm and then the retaining ring.

Step 13 - Reattach the metal spring strap to the closing panel.

Step 14 - Insert the red and black wires back into the circuit board and tighten down.

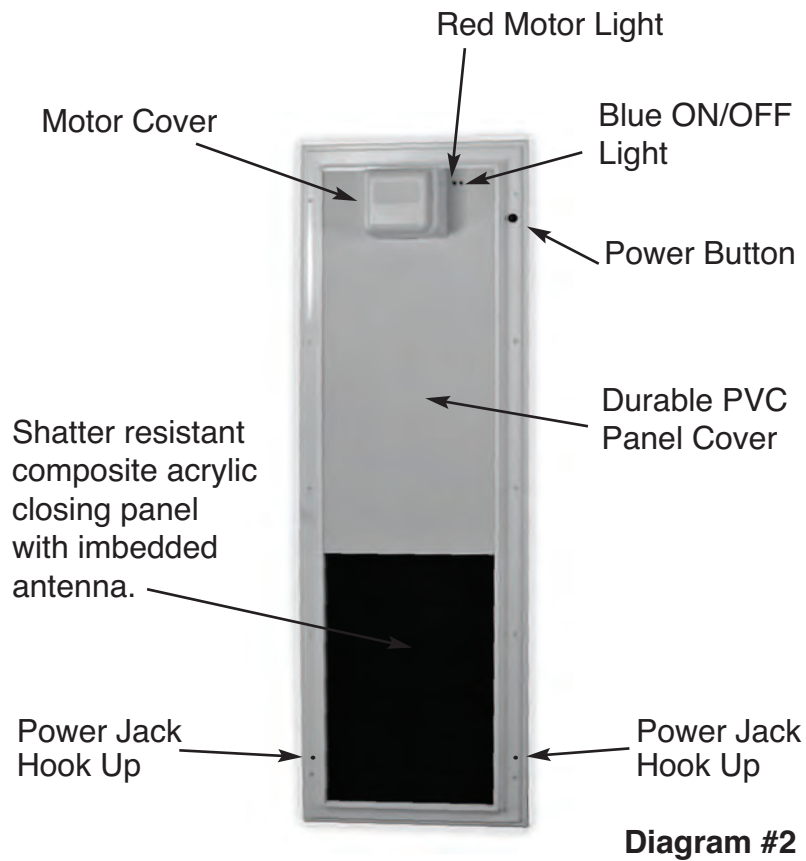
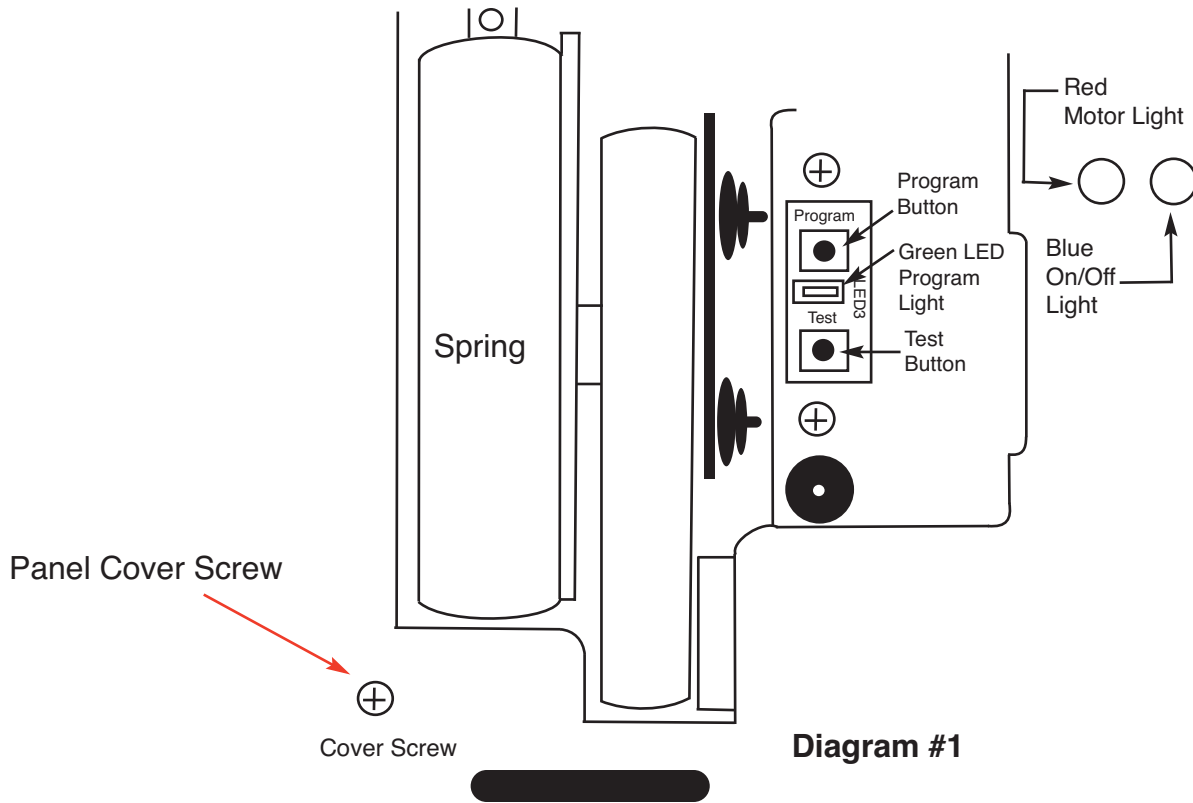
Step 15 - Plug in the pet door and test that the pet door has returned to normal function.

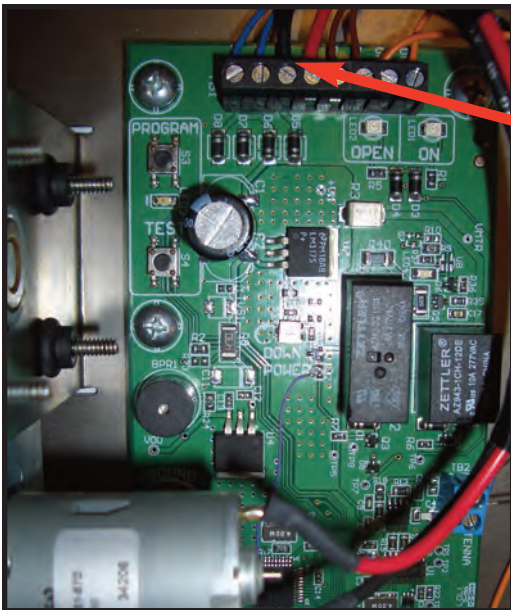
Step 16 - Slide up panel cover and replace the panel cover screw. Put Motor Cover back in place.

You are now finished installing the replacement motor.

Call Tech Support at 800-749-9609 Opt 3 if you need additional assistance.

Diagram of Plexidor® Electronic Motor Area with Cover Off





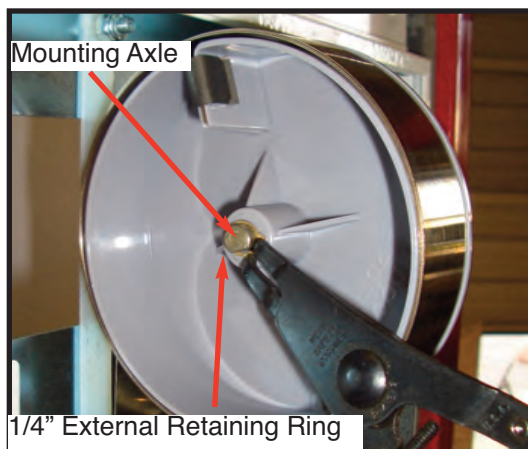
Unscrew and remove red and black wires

Step #4 - Unscrew red and black motor wires from circuit board.

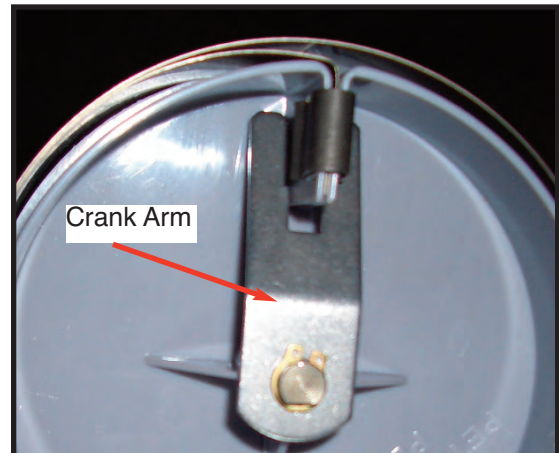


Bottom of Spring Strap with Anchor Hole

Step #5 - Unhook spring strap.



Step #6 - Remove retaining ring



Step #7 - Remove crank arm.



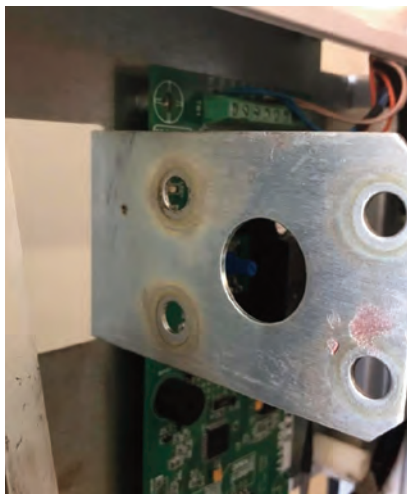
Step #8 - Slide off hub wheel. Pull spring strap over screw post.



Step #8 - Motor gear box with hub wheel removed.



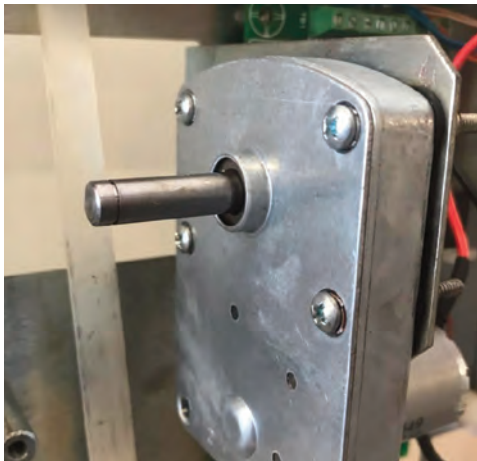
Step 9 - Unscrew phillips head screws holding motor gear box to chassis arm.



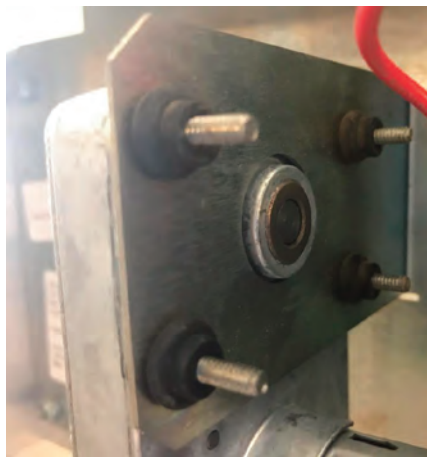
Step 9 Cont'd. - Slide motor off.



Step 10 - Put on new rubber jacketed nuts as shown above, pushing them through the holes in motor chassis plate arm.



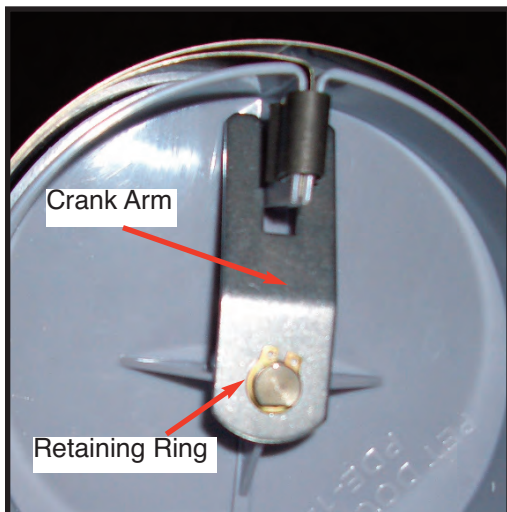
Step 10 Cont'd - Place new motor gear box into position as shown.



Step 10 Cont'd - Screw motor gear box securely using the new rubber jacketed nuts.



Step 11 - Slide hub wheel with spring strap back onto the "D" shaped axle post.



Step 12 - Replace crank arm and then put on retaining ring.



Step 13 - Rehook spring strap to screw post on closing panel.



Step 14- Reattach red and black motor wires to circuit board.